

Leading in Sustainability at Eversource

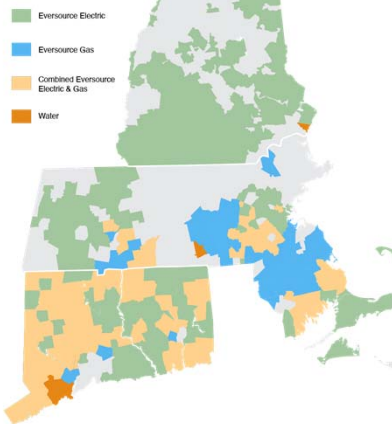
CBIA Meeting | November 19, 2021



1



Eversource at a Glance



- **Largest energy company** in New England
- **9,100 employees** in three states
- About **4.3 million** customers

2

2

Our Commitment to Sustainability

Environmental

We value our natural resources and are committed to protecting them while holding ourselves accountable for the impact our business may have on the environment.

Social

We are dedicated to serving our communities while promoting diversity, equity and inclusion.

Governance

Acting with transparency, honesty and integrity, while providing shareholder value, is fundamental to our company values.

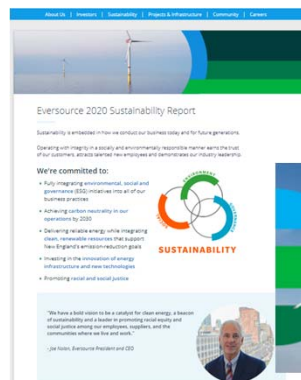


3

3

Transparent Communications is Essential

- Our latest Sustainability Report covers ESG performance updates from 2020 as well as strategic initiatives planned for our sustainability program
- Disclosures are also regularly provided through external information requests



4

4






ENVIRONMENT



5

Carbon Neutral by 2030

- Five areas of reduction
 - Line loss
 - Methane
 - Facilities
 - Fleet
 - SF₆
- Dedicated Governance Committee with working groups addressing:
 - Reductions
 - Offsets
 - Employee engagement
 - External stakeholder outreach

LINE LOSS		69%	Line loss, one of the industry's greatest challenges, represents 69% of our greenhouse gas (GHG) footprint. We are enabling a cleaner mix of energy in the grid and improving efficiencies in our transmission infrastructure.
METHANE		10%	Methane represents 10% of our GHG footprint. We are reducing methane leaks in our natural gas distribution system by replacing aging pipes and pursuing innovative pilots like geothermal.
FACILITIES		10%	Our facilities represent 10% of our GHG footprint. We are reducing our electricity and fuel use at our facilities by upgrading HVAC equipment with more efficient models and replacing lighting with LEDs.
FLEET		7%	Our fleet represents 7% of our GHG footprint. We are updating our company vehicle fleet by adding electric and hybrid vehicles and pursuing innovative partnerships.
SF ₆		4%	Sulfur hexafluoride (SF ₆), a potent greenhouse gas used in electric equipment, represents 4% of our GHG footprint. We are adopting innovative solutions to replace the use of SF ₆ .

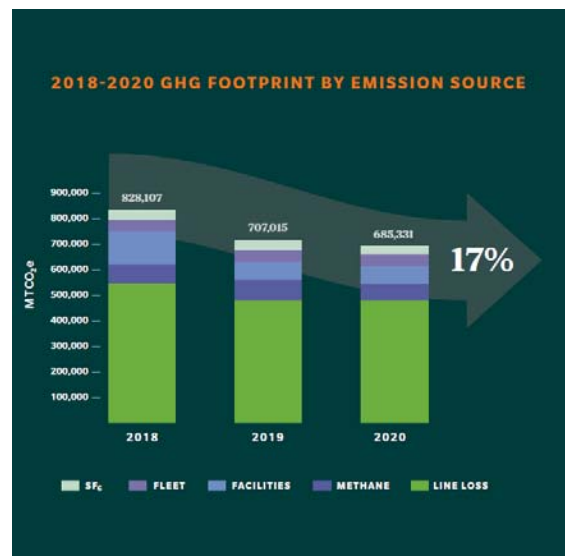
6

6

Our GHG Footprint

- Represents carbon dioxide (CO₂), methane (CH₄), nitrous oxide (N₂O) and sulfur hexafluoride (SF₆) emissions from our operations
- Overall emissions decreased by 17% compared to 2018 and 3% compared to 2019
- The only area with increased emissions in 2020 was Fleet as a result of COVID-19 safety procedures

EVERSOURCE

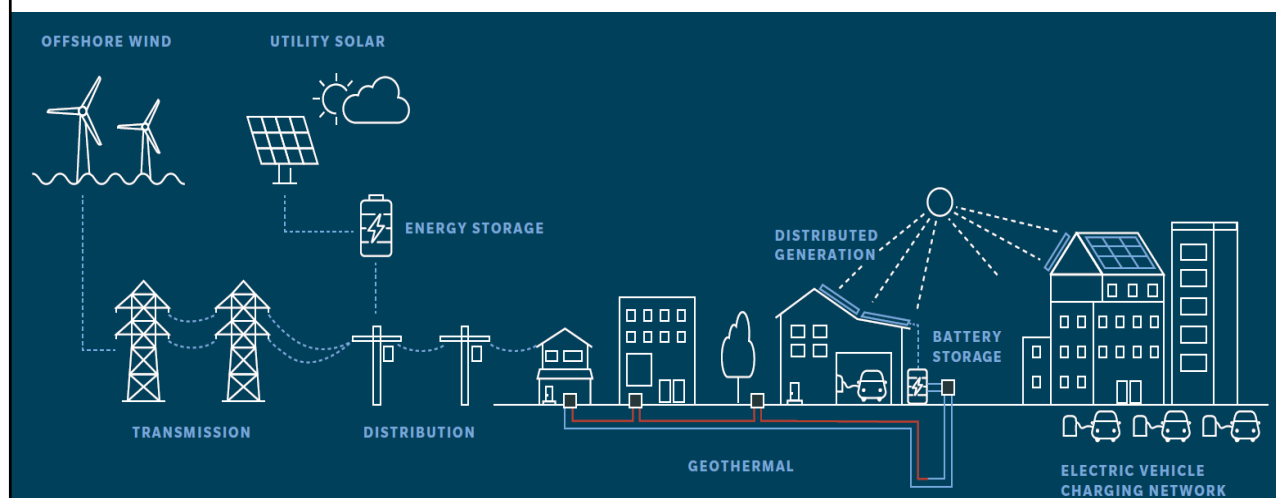


7

7

Enabling a Cleaner Grid

EVERSOURCE



8

8

Leading in Offshore Wind

Three projects representing more than 1,750 MW of renewable energy are contracted

1. **Southfork**
 - 132 MW to power 70,000 homes
2. **Revolution**
 - CT - 304 MW
 - RI - 400 MW
 - Power 350,000 homes
3. **Sunrise**
 - 924 MW to power 600,000 homes

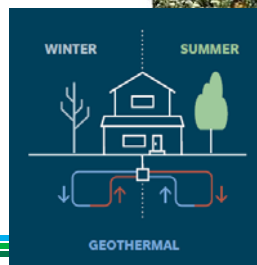


9

9

Solar & Geothermal

- **22 solar facilities producing 70 MW**
powering more than 11,000 homes
- Massachusetts Climate Bill
 - Authorizes each utility to develop 280 MW
 - Includes environmental justice communities
- Piloting geothermal heating and cooling
 - Pulls earth's heat out of the ground to warm buildings in winter
 - Pumps building heat back into the ground in summer to cool them



10

Accelerating EV Charging

- We are investing in infrastructure for the increasing adoption of electric vehicles
- Joined the **Electric Highway Coalition** to provide uninterrupted EV travel
- On track to triple MA's network of chargers with 19% installed in environmental justice communities (exceeding 10% goal)
- Supporting charging corridor in NH and looking for opportunities to support the growth of chargers in CT



11

11

EVERSOURCE

System Innovations & Investments

- **Transmission**
 - Undergoing significant upgrades to reach state and regional carbon reduction goals
- **Distribution System Enhancements**
 - Distribution automation enhancements reduce single outage events by more than 25%
- **Distributed Generation**
 - 100,000 customers installed renewable facilities (solar, wind) totaling more than 2,700 MW of generation
- **Grid Modernization**
 - Technologies to increase distribution capacity to incorporate clean distributed energy
- **Natural Gas Infrastructure**
 - \$487 million investments in gas distribution infrastructure

12

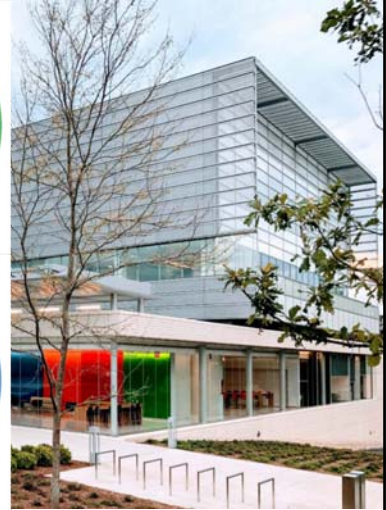
12

Adapting to Climate Change

- **Emergency preparedness and resiliency plans**
- **Eversource Energy Center at UConn**
 - Helps us reach optimal balance of grid hardening for reliability while minimizing impact of roadside vegetation
- **Overhead and electrical system hardening**
- **Deployment of Technology**
 - Isolates outages and efficiently reroutes electricity
- **Resilient designs in flood-prone areas**

PLANTED OVER
6,500
TREES COMPATIBLE WITH
OVERHEAD WIRES

DONATED
10,000
SAPLINGS TO BE PLANTED
IN NEIGHBORHOODS
AND PUBLIC SPACES

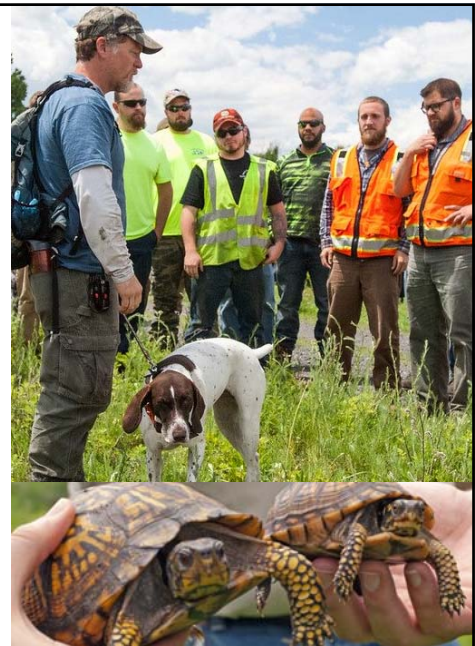


13

13

Environmental Stewardship

- **Corporate Environmental Policy**
- **Waste Management**
 - Recovery Team saved 12,000 metric tons of material from landfills
 - Metal recycling increased by 107%
- **Land Preservation**
 - Own/maintain ~40,000 acres of land
- **Wildlife and Habitat Protection**
 - Trained dogs find endangered Eastern Box Turtles
 - Avian Management Program protect birds like Osprey and Eagles



14

14

Aquarion Water Management

- Provided more than 26 billion gallons of clean drinking water to 215,000 customers
- Replaced 30 miles of water main
- Increased traditional leak surveys and deployed innovative technology to listen for leaks
- Collected over 18,000 water samples
- Completed over 168,000 water quality tests
- Water quality reports delivered annually



CONSERVING MILLIONS OF GALLONS OF WATER

In response to the drought of 2016, we implemented a permanent program limiting irrigation to two days per week in four Connecticut towns where reservoirs were particularly stressed by the drought. The program had grown to include six towns by 2020 and has saved an average of 681 million gallons of water annually. Three additional towns will be rolled into the program in 2021.

SAVING AN
AVERAGE OF
681
MILLION GALLONS
OF WATER ANNUALLY

15

15

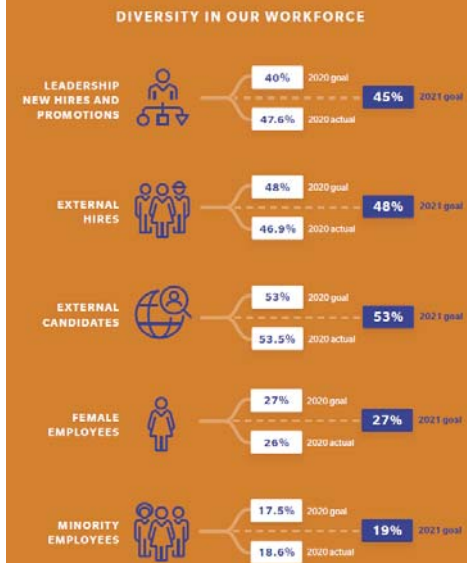
SOCIAL



16

Celebrating Our Differences

- **Diversity and Inclusion**
 - Signatory to the CEO Action for Diversity & Inclusion™ pledge
 - Participant in the Paradigm for Parity
- **D&I Council and 6 Business Resource Groups (BRGs)**
 - Help to integrate diversity, equity and inclusion practices
 - Formed a Racial Equity Task Force
 - CEO led employee meetings on disrupting systematic racism
- **Differently Abled Employees**
 - 2020 Leading Disability Employer, recognizes organizations leading in disability inclusion



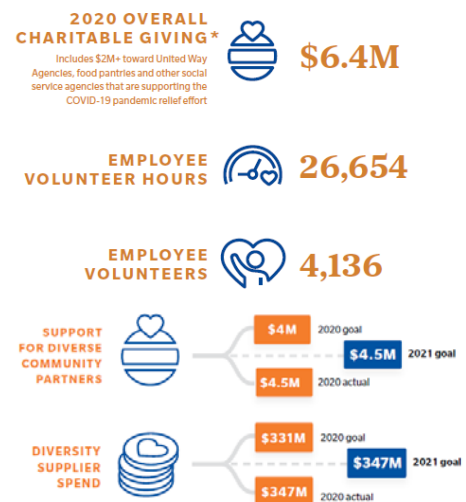
17

17

Caring for Our Customers & Communities

EVERSOURCE

- **Customer Assistance Programs**
 - Expanded programs to customers facing hardship due to COVID
 - Proactively suspended residential and business shut-offs
 - Dedicated team provided support and guidance to small business on federal pandemic stimulus programs
- **Community Relations**
 - Community Liaison is assigned to provide proactive outreach and coordination during emergency events
- **Charitable Giving**
 - Contributed \$6.4 million to charities in CT, MA and NH
 - Donated \$2 million to nonprofits supporting COVID relief
- **Employee Giving and Volunteerism**
 - 4,000 employees volunteered more than 26,000 hours



18

18

GOVERNANCE



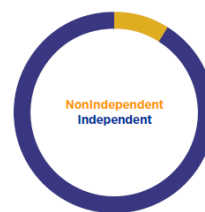
19

Strong Corporate Governance

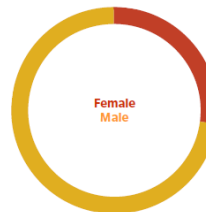
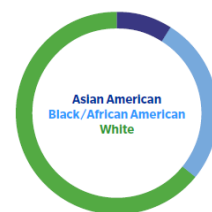
EVERSOURCE

- **Board of Trustees**
 - Dedicated Committee overseeing ESG
 - Industry-leading diversity
 - Contributes to overall effectiveness
- **Ethics**
 - Recently updated Code of Business Conduct
 - Compliance and Ethics Committee
 - Corporate Compliance Hotline, accessible 24/7 to anonymously report compliance or ethics violations
- **Risk Management**
 - Enterprise Risk Management program is integrated with assurance functions including Compliance, Auditing and Insurance

INDEPENDENCE



ETHNIC DIVERSITY



GENDER DIVERSITY



TENURE

20

20

External Recognition

- #1 energy company on **Newsweek's** list of **Most Responsible Companies**, recognizing our commitment to corporate social responsibility
- Second straight year on the **JUST Capital/Forbes Most Just Companies** list, honoring our combination of corporate social responsibility and business success
- One of only two energy companies on the **Barron's 100 Most Sustainable Companies** list, based on 230 performance indicators addressing environmental, social and corporate governance issues
- Institutional investor rated us **one of the top two U.S. utilities** in eight categories related to executive leadership, sustainability, governance, investor relations and communications



21

21

Thank you



22

22